



## Hounslow

Blackout 2800mm

Hounslow	
Base material	100% PES
Finish	Black-out coated
Cleaning	Damp cloth
Recommended cut method	Cold cut
Roller roll length	ca. 35m - 38.2yd
Roller width	2800mm - 110.2in
Shrinkage	≤ 1%
Weight	400g/m <sup>2</sup> - 11.80oz/yd <sup>2</sup>
Thickness	0.58mm - 0.022in
Light fastness	4-5 ISO105
Suitable for moist conditions	Yes
FR	No

your distributor:

**TIDMARSH**  
Established 1828

Unit 3, Station Yard Industrial Estate,  
Station Road, Dunmow,  
Essex, CM6 1XD  
+44 (0) 1245 237228  
info@tidmarsh.co.uk  
www.tidmarsh.co.uk



# Hounslow

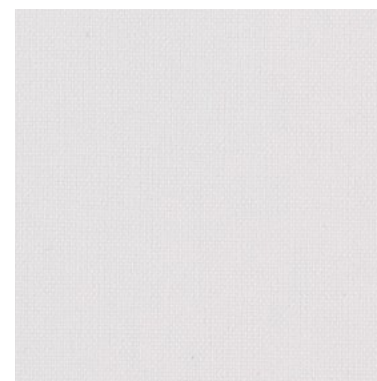
The Hounslow blackout fabric is ideal for areas that need greater light control, such as bedrooms. With a natural, cotton-effect finish, Hounslow produces a warm, cosy feel.

- ☑ 2800mm width is suitable for larger windows
- ☑ Self-coloured backing to create a consistent look from inside and outside a room



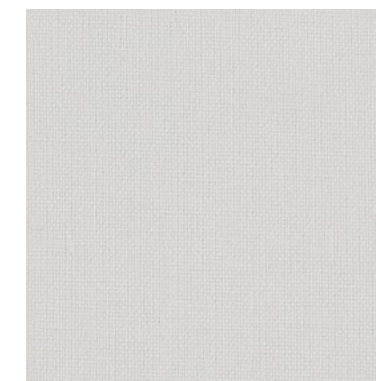
4570RB280

White



4570RB280

White



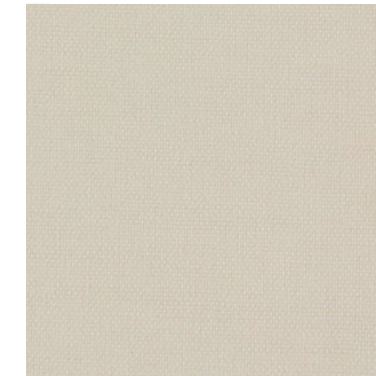
4572RB280

Pearl



4576RB280

Sand



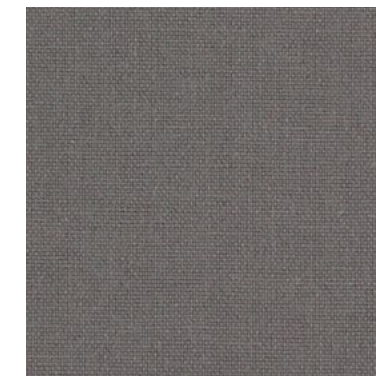
4574RB280

Oyster



4588RB280

Ash



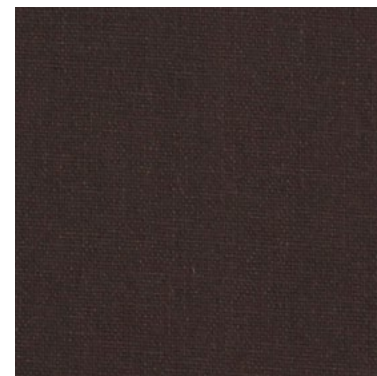
4586RB280

Frost Grey



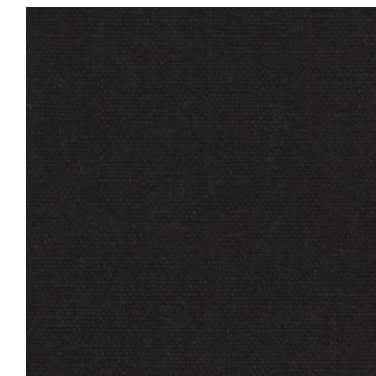
4584RB280

Plum



4578RB280

Coffee



4580RB280

After Dark



4582RB280

Indigo