



**Harrow/Enfield**  
Transparent/blackout 2800mm

	Harrow	Enfield
Base material	100% PES	100% PES
Finish	Transparent coated	Black-out coated
Cleaning	Damp cloth	Damp cloth
Recommended cut method	Cold cut	Cold cut
Roller roll length	35m - 38.2yd	30m - 32.8yd
Roller width	2800mm - 110.2in	2800mm - 110.2in
Shrinkage	≤ 1%	≤ 1%
Weight	195g/m <sup>2</sup> - 5.75oz/yd <sup>2</sup>	350g/m <sup>2</sup> - 10.32oz/yd <sup>2</sup>
Thickness	0.43mm - 0.016in	0.54mm - 0.021in
Light fastness	≥ 4 ISO 105	≥ 4 ISO 105
Suitable for moist conditions	Yes	Yes
FR	No	No

your distributor:

**TIDMARSH**  
Established 1828

Unit 3, Station Yard Industrial Estate,  
Station Road, Dunmow,  
Essex, CM6 1XD  
+44 (0) 1245 237228  
info@tidmarsh.co.uk  
www.tidmarsh.co.uk



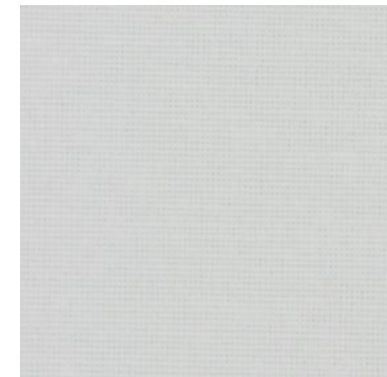


## Harrow/Enfield

Harrow and Enfield are contemporary fabrics designed for domestic applications. They are 2800mm wide, making them ideal for modern homes with larger windows.

- ⊙ White backing on blackout fabrics to provide a consistent appearance from outside a building
- ⊙ Soft pastel colours included in the Harrow range such as Mint and Blush

## Harrow



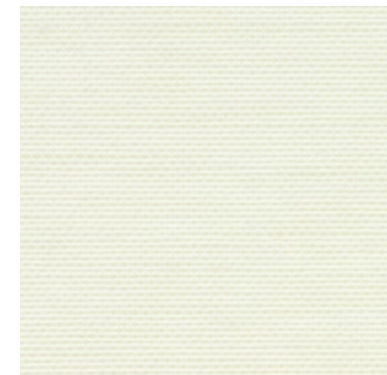
4550RB280 Cloud



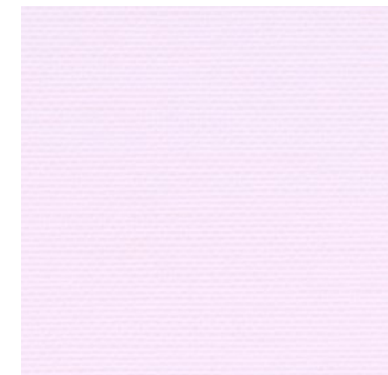
4552RB280 Cream



4554RB280 Beige



4564RB280 Saffron



4562RB280 Blush



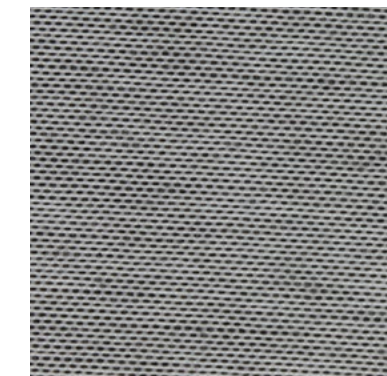
4556RB280 Sand



4566RB280 Mint



4560RB280 Mist



4558RB280 Slate

## Enfield



4760RB280 Cloud



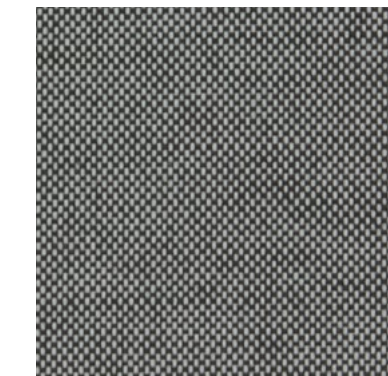
4672RB280 Sand



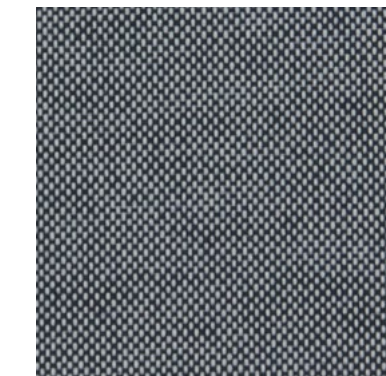
4764RB280 Taupe



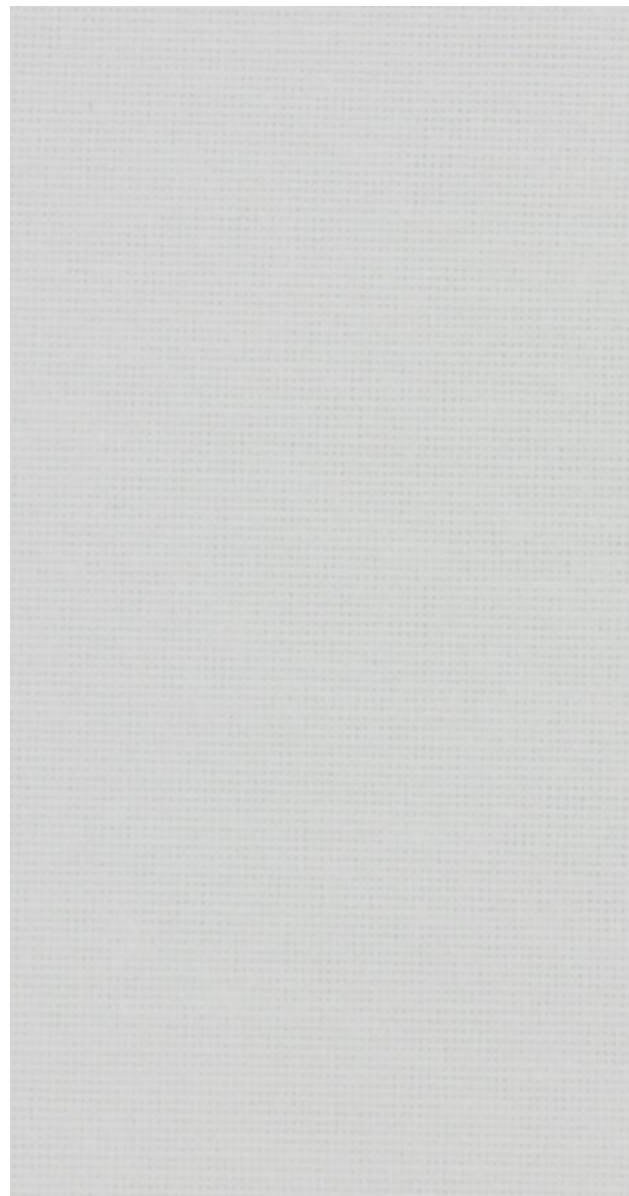
4770RB280 Aubergine



4766RB280 Black



4768RB280 Indigo



4550RB280



Cloud

4760RB280

Cloud